



DERBY MARKETPLACE RETAIL SPACE

1912-1942 N. Rock Road, Derby, Kansas



LEASE RATE: \$16.50/SF | 1,687 SF & 4,500 SF SPACES

DEMOGRAPHICS

	1 mile	3 miles	5 miles
Estimated Population	6,520	26,968	43,132
Avg. Household Income	\$102,753	\$105,663	\$99,645

- Derby Marketplace pulls from two states and a trade area of 650,000 people evidenced by the number of national tenants in the center
- Anchors include Target, Dillons, Hibbett Sports, Hobby Lobby, Petco, Ross Dress for Less, T.J. Maxx, and ULTA Beauty
- 18 colleges and technical schools serve the area
- Rock Road (23,750 CPD) is one of the fastest-growing retail corridors in the Wichita MSA, serving residents of Sedgwick, Butler, Sumner, and Cowley Counties



CLICK HERE TO VIEW MORE LISTING INFORMATION

For More Information Contact:

GARRETT COHOON | 816.412.7315 | gcohoon@blockandco.com

DAKOTA GRIZZLE | 816.412.7395 | dgrizzle@blockandco.com

Exclusive Agents



DERBY MARKETPLACE RETAIL SPACE

1912-1942 N. Rock Road, Derby, Kansas

AERIAL

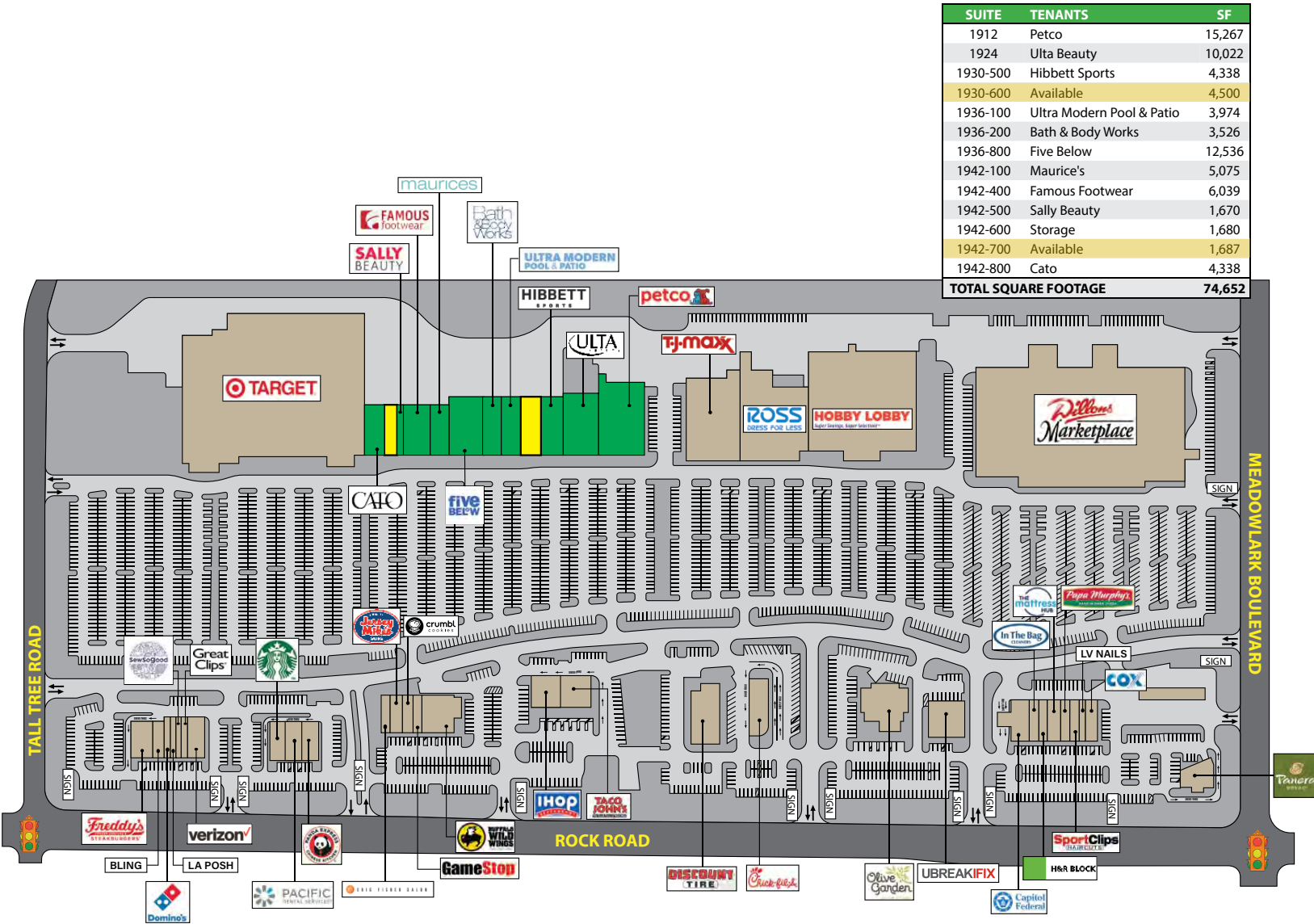




DERBY MARKETPLACE RETAIL SPACE

1912-1942 N. Rock Road, Derby, Kansas

SITE PLAN

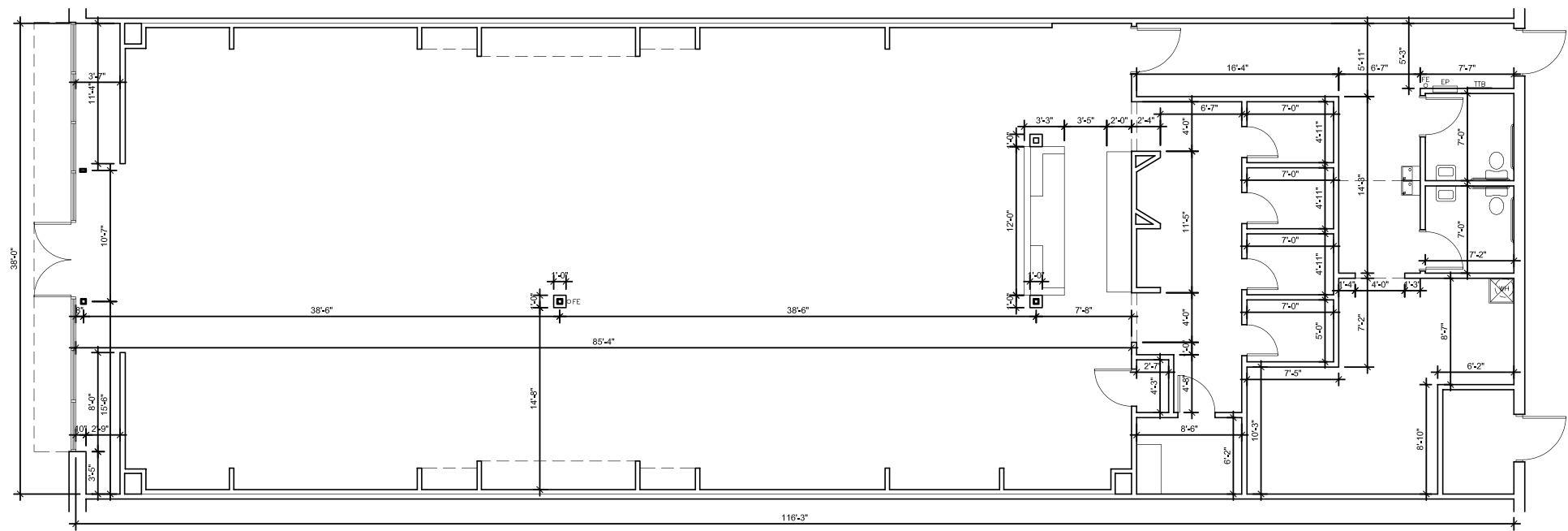




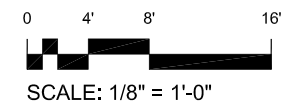
DERBY MARKETPLACE RETAIL SPACE

1912-1942 N. Rock Road, Derby, Kansas

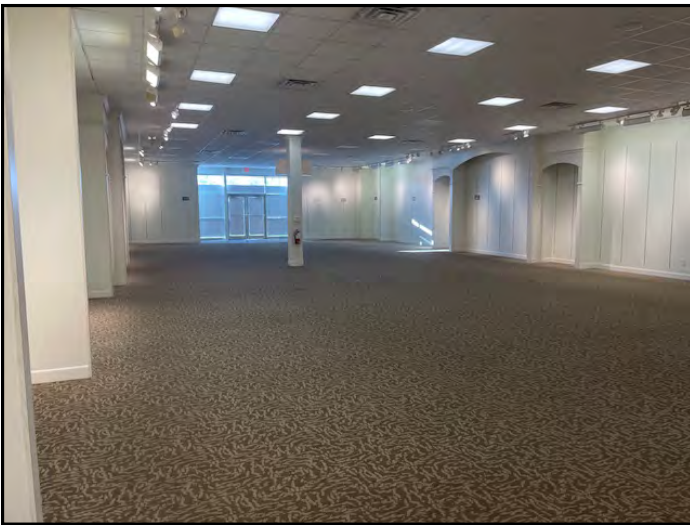
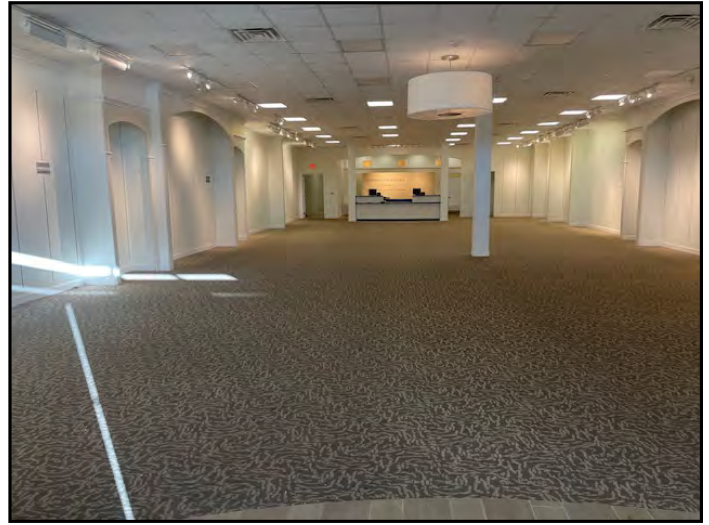
4,500 SF SPACE FLOOR PLAN



Suite 600 Floor Plan
1930 N. Rock Road
Derby, Kansas

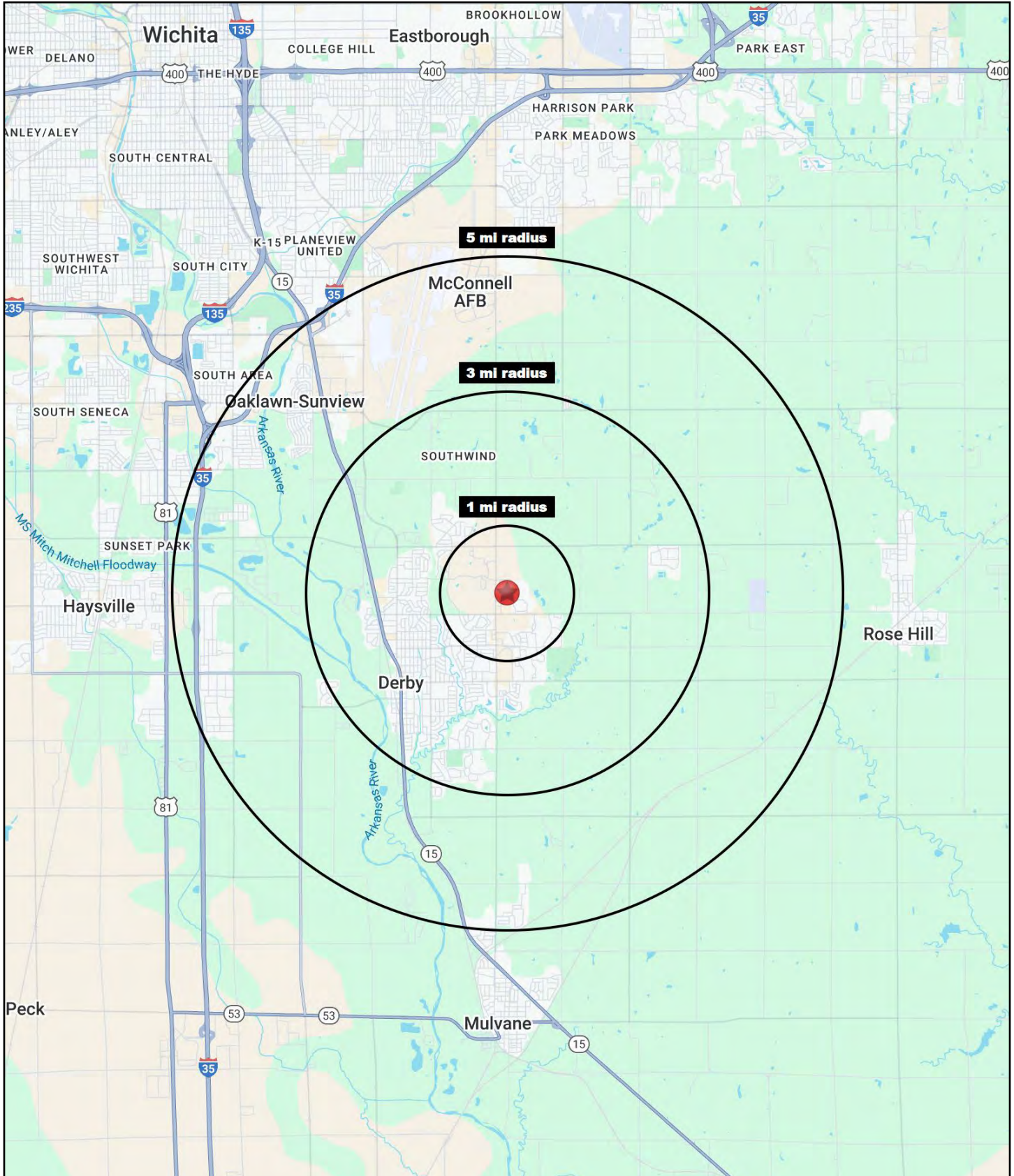


4,500 SF SPACE PHOTOS



DERBY MARKETPLACE RETAIL SPACE

1912-1942 N. Rock Road, Derby, Kansas





DERBY MARKETPLACE RETAIL SPACE

1912-1942 N. Rock Road, Derby, Kansas

1912-1942 N. Rock Road Derby, KS 67037	1 mi radius	3 mi radius	5 mi radius
Population			
2024 Estimated Population	6,520	26,968	43,132
2029 Projected Population	6,626	27,197	43,542
2020 Census Population	6,606	27,585	43,646
2010 Census Population	4,102	24,124	40,462
Projected Annual Growth 2024 to 2029	0.3%	0.2%	0.2%
Historical Annual Growth 2010 to 2024	4.2%	0.8%	0.5%
2024 Median Age	38.0	37.6	37.3
Households			
2024 Estimated Households	3,029	10,770	16,732
2029 Projected Households	3,109	10,940	17,044
2020 Census Households	2,917	10,699	16,457
2010 Census Households	1,648	9,011	14,703
Projected Annual Growth 2024 to 2029	0.5%	0.3%	0.4%
Historical Annual Growth 2010 to 2024	6.0%	1.4%	1.0%
Race and Ethnicity			
2024 Estimated White	83.7%	85.9%	82.3%
2024 Estimated Black or African American	4.4%	2.8%	3.1%
2024 Estimated Asian or Pacific Islander	2.7%	2.2%	3.2%
2024 Estimated American Indian or Native Alaskan	0.4%	0.6%	0.8%
2024 Estimated Other Races	8.8%	8.6%	10.6%
2024 Estimated Hispanic	9.8%	8.9%	11.3%
Income			
2024 Estimated Average Household Income	\$102,753	\$105,663	\$99,645
2024 Estimated Median Household Income	\$83,280	\$88,022	\$82,271
2024 Estimated Per Capita Income	\$47,906	\$42,323	\$38,924
Education (Age 25+)			
2024 Estimated Elementary (Grade Level 0 to 8)	0.6%	1.9%	3.7%
2024 Estimated Some High School (Grade Level 9 to 11)	0.7%	2.5%	4.1%
2024 Estimated High School Graduate	17.9%	21.1%	24.4%
2024 Estimated Some College	24.3%	23.8%	23.2%
2024 Estimated Associates Degree Only	10.5%	12.6%	12.0%
2024 Estimated Bachelors Degree Only	30.2%	24.9%	21.5%
2024 Estimated Graduate Degree	15.8%	13.2%	11.0%
Business			
2024 Estimated Total Businesses	176	635	883
2024 Estimated Total Employees	1,637	5,890	8,570
2024 Estimated Employee Population per Business	9.3	9.3	9.7
2024 Estimated Residential Population per Business	36.9	42.5	48.8

©2025, Sites USA, Chandler, Arizona, 480-491-1112 Demographic Source: Applied Geographic Solutions 11/2024, TIGER Geography - RS1

